

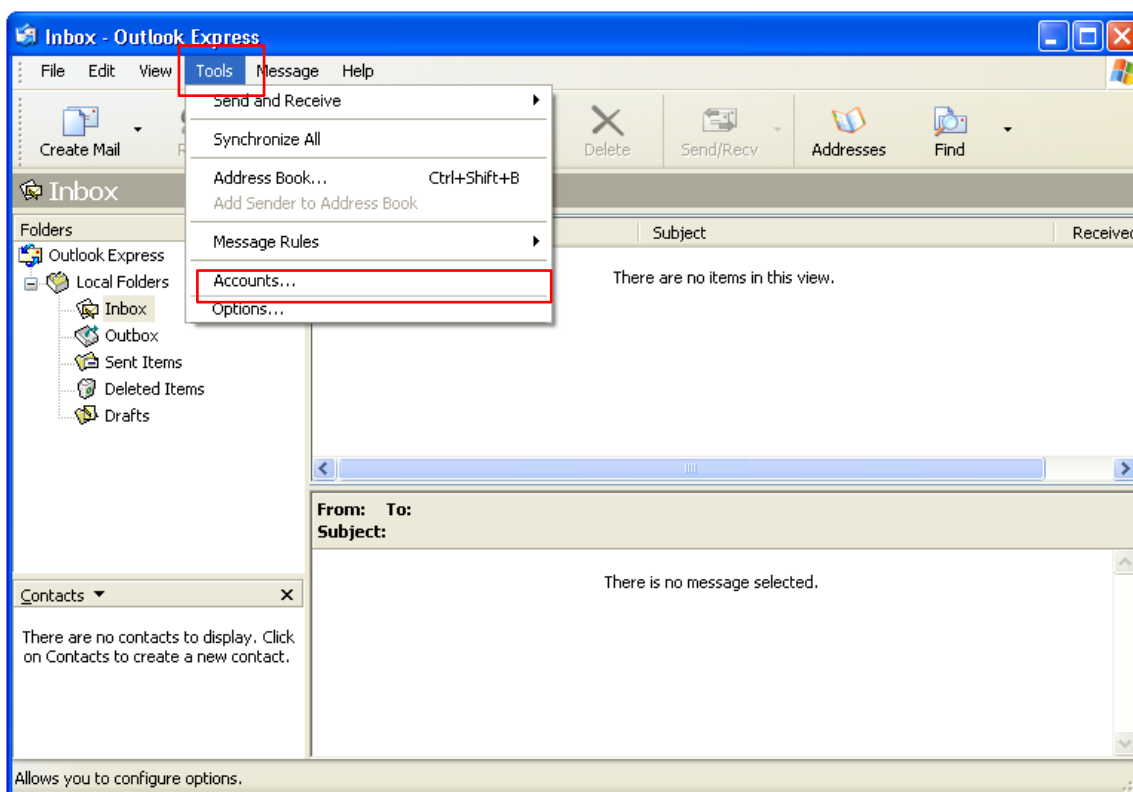
Podešavanje Outlook Express e-mail klijenta

U narednim koracima ćemo Vam prikazati kako da podesite Microsoft Outlook 2010 e-mail kako bi mogli upravljati elektronskom poštom. U slučaju potrebe, naša tehnička podrška Vam stoji na raspolaganju.

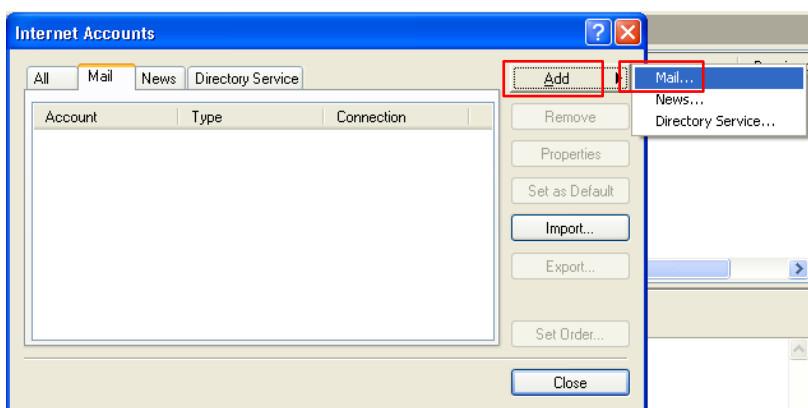
Napomena:

Pojedini dijelovi uputstva mogu odstupati od stvarnih podataka. Budite sigurni da ste zamijenili podatke s onima koji su relevantni za Vaš nalog.

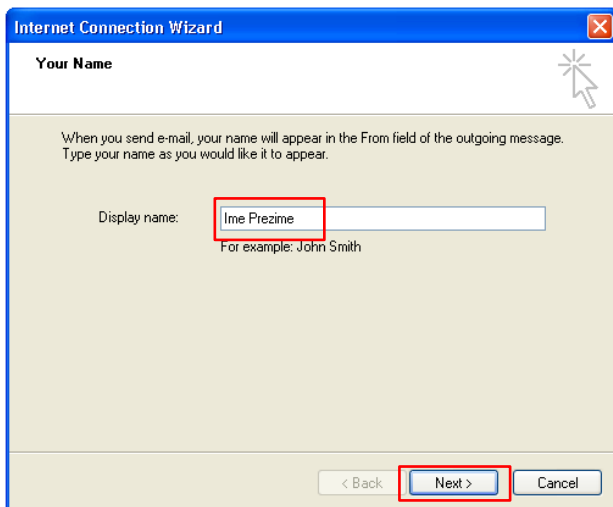
1. Otvorite aplikaciju Outlook Express. Kliknite na opciju **Tools** na gornjoj strani prozora i odaberite opciju **Accounts**.



2. Otvoriće se novi prozor na kojem ćete kliknuti **Add** pa na ociju **Mail**.



- U početnom prozoru unesite Vaše **Ime i Prezime**, pa kliknite **Next**, zatim unesite Vašu punu **e-mail adresu**, pa obet kliknite **Next**.



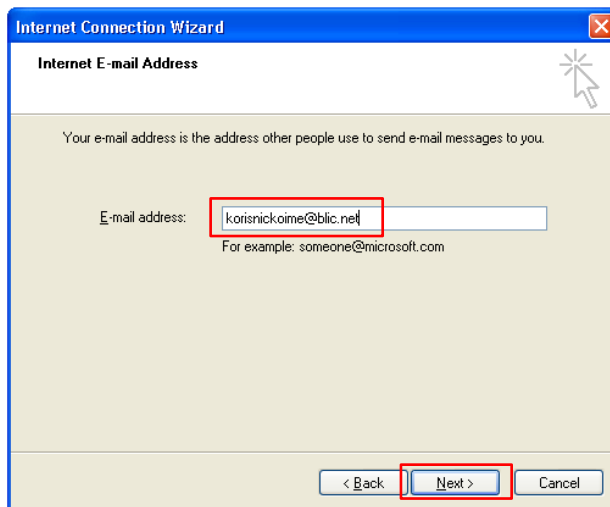
Internet Connection Wizard

Your Name

When you send e-mail, your name will appear in the From field of the outgoing message. Type your name as you would like it to appear.

Display name:
For example: John Smith

< Back **Next >** Cancel



Internet Connection Wizard

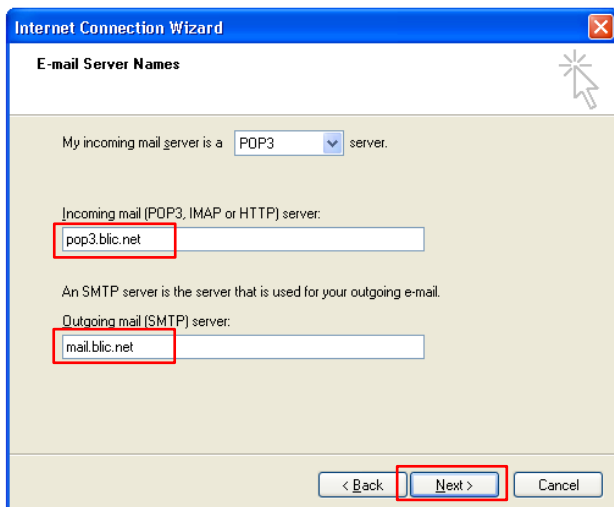
Internet E-mail Address

Your e-mail address is the address other people use to send e-mail messages to you.

E-mail address:
For example: someone@microsoft.com

< Back **Next >** Cancel

- U slijedećem koraku u polje **Incoming mail server** upišite **pop3.blic.net**, a u polje **Outgoing mail (SMTP) server** upišite **mail.blic.net**, pa kliknite **Next**.



Internet Connection Wizard

E-mail Server Names

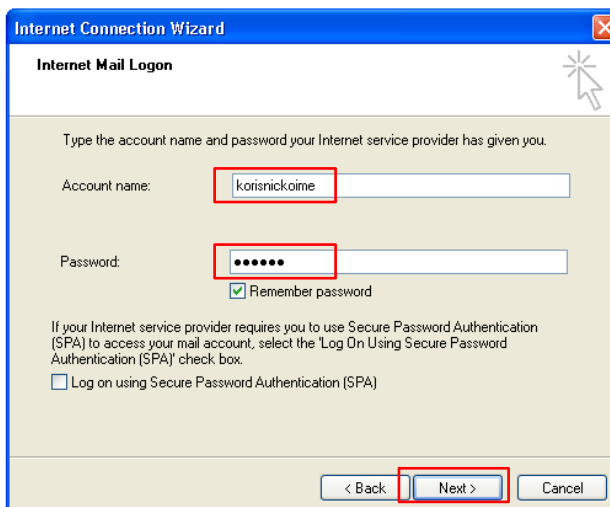
My incoming mail server is a server.

Incoming mail (POP3, IMAP or HTTP) server:

An SMTP server is the server that is used for your outgoing e-mail.

Outgoing mail (SMTP) server:

< Back **Next >** Cancel



Internet Connection Wizard

Internet Mail Logon

Type the account name and password your Internet service provider has given you.

Account name:

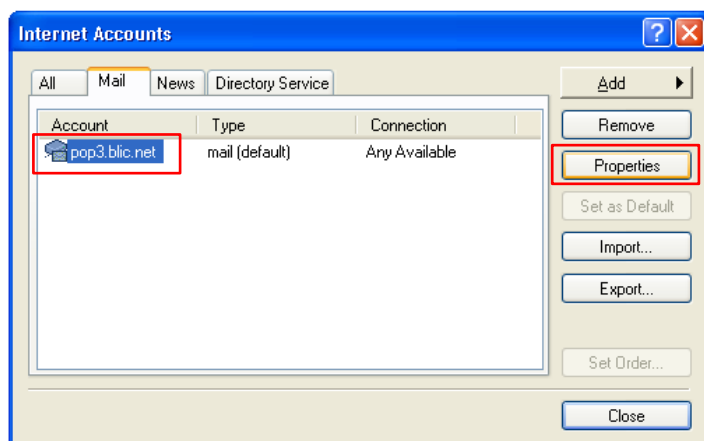
Password:
 Remember password

If your Internet service provider requires you to use Secure Password Authentication (SPA) to access your mail account, select the 'Log On Using Secure Password Authentication (SPA)' check box.

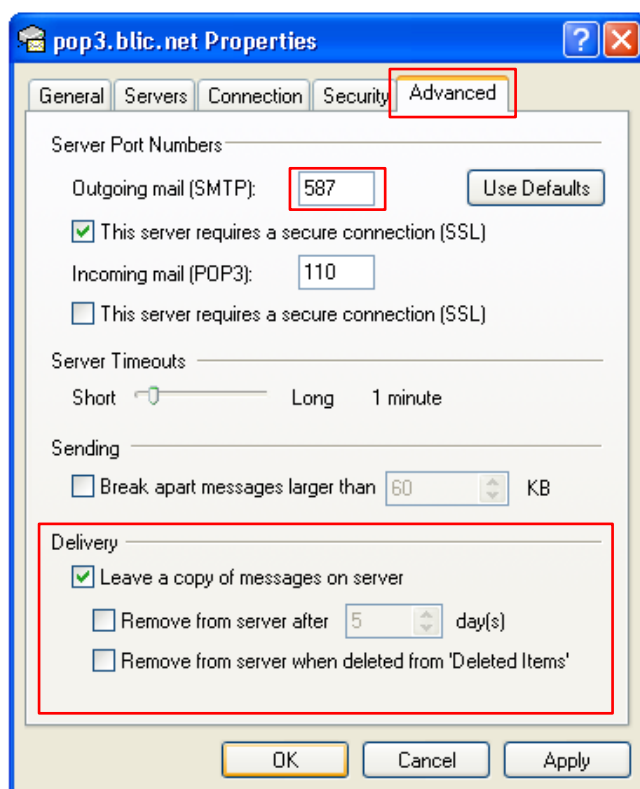
Log on using Secure Password Authentication (SPA)

< Back **Next >** Cancel

- Na kraju kliknite **Finish**.
- Kada smo kreirali mail nalog potrebno je da dodatno podesimo server za odlaznu poštu. U listi mail naloga kliknite na nalog koji smo upravo kreirali (*pop3.blic.net*) te kliknite na dugme **Properties**.



7. Kliknite na tab **Advanced**. U polje **Outgoing server (SMTP)**: upišite **587**, a odmah ispod zakačite kvačicu u polje **This server requires a secure connection (SSL)**.



Napomena:

U odjeljku **Delivery**, možete odrediti da li želite da se poruke čuvaju na serveru ili da odredite vrijeme za koje će se poruke obrisati sa servera.

8. Nakon što ste unijeli podatke kliknite **OK**.
9. Na kraju, klikom na opciju **Close** završava se podešavanje mail naloga.